

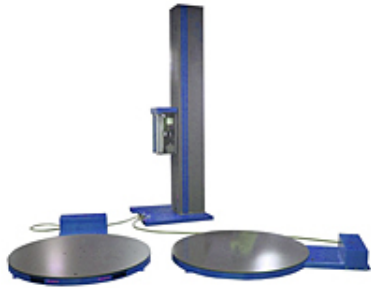
9555 W. Irving Park Road

Schiller Park, IL 60176

Phone: 847-678-9034 • Fax: 847-671-7006

Email: info@arpac.com

Item # Sidewinder 4 Dual Turntable LP, Dual Turntable Low Profile Heavy-Duty Semi-Automatic Stretch Wrapper



Dual Turntable Low Profile Heavy-Duty Semi-Automatic Stretch Wrapper

The SIDEWINDER® 4 is part of a robust line of stretch wrapping equipment designed to maximize stretch film usage while ensuring the very best load unitization. All ARPACSTRETCH™ equipment is constructed with heavy gauge reinforced structural steel and finished with non-corrosive Steel-It paint, guaranteeing years of reliable wrapping. The SIDEWINDER® 4 is manufactured in the USA and sold through our nationwide distribution network.

The SIDEWINDER® 4 is a heavy-duty semi-automatic stretch wrapper with 4,000 lb. capacity. This model is available with a high profile turntable for forklift loading, and low profile turntable for pallet-jack loading.

The SIDEWINDER® 4 can be customized with extended towers for taller loads, and split frames for odd-sized larger loads. This system is also available with a 30" film carriage and dual turntables for greater throughput, cold and freezer packs for reliable operation in extremely harsh temperatures, and a pneumatic roping device for additional load support. For more efficiency, an Automatic Film Tear Device (AFTD) tears the film automatically at the end of the wrapping cycle.

- Robust ergonomic design
- Maintenance free
- User-friendly
- Replaces expensive hand wrapping

FEATURES

- **Split frame construction:** used as a means of increasing film tower clearance or where an odd sized turntable is required
- Welded heavy-duty reinforced structural steel construction for around-the-clock operation
- Steel-It paint provides a durable scratch resistant surface and prevents corrosion
- 4 point caster support for HP turntable
- 6 pairs - Delrin caster support for LP turntable
- Turntable direct drive: 1/2 HP, DC motor with ANSI 50 chain
- Allen-Bradley® Micrologix PLC
- User-friendly operator controls with dual LED wrap counters
- Built in self-diagnostics
- Electronically controlled film tension adjustment
- Top over-wrap control feature
- Cycle pause and turntable jog control
- Carriage pause control (banding)
- Positive home position alignment
- 3 wrap pattern selections
- Photo electric load height sensor that detects most dark colored loads
- Adjustable top and bottom wrap counters (0-7)
- Corner compensation

- Anti-static rollers
- UL approved components
- External fuses
- Variable carriage speed (0-21 FPM)
- EZ-LOAD FLM SAVR® Powered Pre-Stretch 150%-300% (200% standard)
- Film delivery: 1/2 HP, 90 VDC motor
- Carriage drive: 1/3 HP, 90 VDC motor
- Dual ANSI chain lift drive