



# MODELS 5200P

## AIR FILTER REGULATOR

### SECTION I

#### I. DESCRIPTION AND SCOPE

These regulators are designed for air service only. Maximum allowable inlet pressure is 250 psi. Operating temperatures are 0° to 160° F. The 5200P has low capacity internal relief which provides very limited down stream over pressure protection. Note: Non-relieving version does not provide internal relief. To avoid exceeding outlet pressure limits in service, a pressure-relieving or pressure-limiting device should be provided.

### SECTION II

#### II. INSTALLATION

Install the regulator as close as possible to the instrument or tool it is to service. For best filter drainage orient the drain valve so that it is at the lowest point on the dripwell housing. The words "IN" and "OUT" are cast into the body to indicate the direction of flow.

### SECTION III

#### III. PRINCIPLE OF OPERATION

Prior to turning on supply air, back off adjusting screw until there is no compression of the range spring. After turning supply pressure on, turn the adjusting screw clockwise to increase outlet pressure.

### SECTION IV

#### IV. MAINTENANCE

1. To remove condensate, slowly open drain valve and bleed accumulated liquid.
2. To clean filter element
  - a. Shut off supply air.
  - b. Drain condensate.
  - c. Remove four corner bolts from bottom of unit.
  - d. Remove dripwell housing and filter.
  - e. Clean parts and reassemble in reverse order.



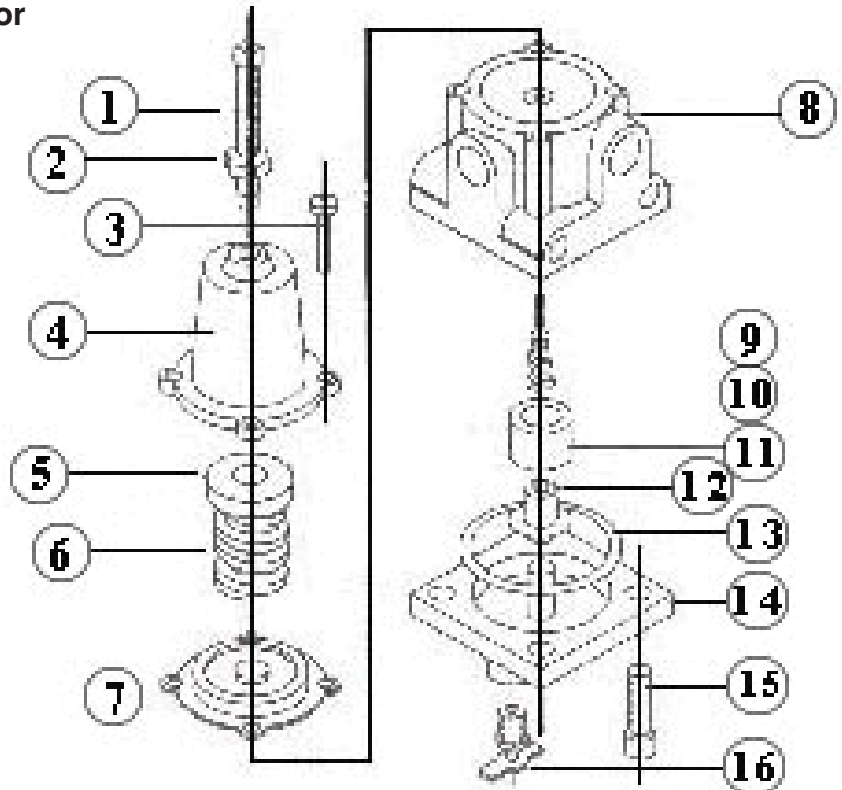
### WARNING

These products are intended for use in industrial compressed-air systems only. Do not use these products where pressures and temperatures can exceed those listed under specifications.

Before using these products with fluids other than air, for non-industrial applications, life-support systems, or other applications not within published specifications, consult factory.

## 5200P Instrument Air Filter Regulator

1. Adjusting Screw
2. Locknut
3. Bonnet Build Screw
4. Bonnet
5. Spring Guide
6. Range Spring
7. Diaphragm Assembly
8. Body
9. Pintle Assembly
10. Pintle Spring
11. Filter
12. Filter Retainer Assembly
13. Dripwell Gasket
14. Dripwell Housing
15. Dripwell Build Screw
16. Drain Valve



The contents of this publication are presented for informational purposes only, and while every effort has been made to ensure their accuracy, they are not to be construed as warranties or guarantees, express or implied, regarding the products or services described herein or their use or applicability. We reserve the right to modify or improve the designs or specifications of such product at any time without notice.

Cashco, Inc. does not assume responsibility for the selection, use or maintenance of any product. Responsibility for proper selection, use and maintenance of any Cashco, Inc. product remains solely with the purchaser.

Cashco, Inc.  
P.O. Box 6  
Ellsworth, KS 67439-0006  
PH (785) 472-4461  
Fax. # (785) 472-3539  
www.cashco.com  
email: sales@cashco.com  
Printed in U.S.A. IOM-31-N

Cashco GmbH  
Handwerkerstrasse 15  
15366 Hoppegarten, Germany  
PH +49 3342 30968 0  
Fax. No. +49 3342 30968 29  
www.cashco.com  
email: germany@cashco.com

Cashco do Brasil, Ltda.  
Al.Venus, 340  
Indaiatuba - Sao Paulo, Brazil  
PH +55 11 99677 7177  
Fax. No.  
www.cashco.com  
email: brazil@cashco.com