

ENERVEX®

TDF 160-250 POWER VENTER

3912521 03.16

Product Information

Use

The TDF Power Venter is a true in-line power venter. It is specifically designed for applications where reliable and efficient operation, low noise level, low energy consumption, variable speed and compact design are of utmost importance.

Typical applications are: mechanical venting of gas-fired or oil-fired boilers and water heaters. For indoor or outdoor installation.

Description

The TDF Power Venter is an efficient, high-temperature ventilator with backward-inclined impeller. It can be installed horizontally or vertically in a chimney system.

The fan housing is made of stainless steel and equipped with an energy-efficient, totally enclosed, variable speed motor, which is mounted outside the air stream.

The complete drive unit (motor, impeller and mounting plates) can be removed from the fan without the need for removing the housing from the stack system.

The TDF is for use with condensing and non-condensing appliances operating where flue gas temperatures do not exceed 1400°F (760°C).

The TDF model is a component in the CASI, Chimney Automation System.

Material

The housing is made of 316L stainless steel and has flanged connection. The impeller is of the backward inclined type made of 316L stainless steel.

Motor

The TDF is equipped with an air cooled, maintenance-free variable speed permanent-magnet motor with pre-lubricated and sealed ball bearings. The motor and controller is rated at 92% efficiency and able to operate as low as 50 RPM. The motor has integrated protection against overloading, blocking over and under voltage and over-heating.

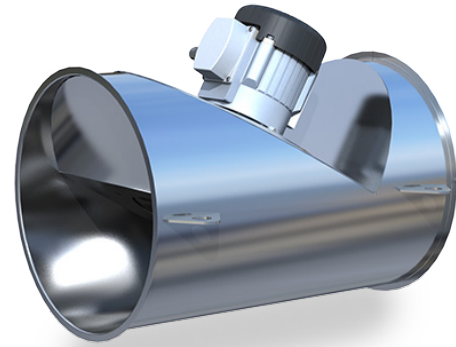
The required motor control is factory programmed by ENERVEX for optimal operation of the ventilator.

Standard Equipment

- EDrive Motor Control
- V-Band

Optional Equipment

- EBC 30/31 Modulating Pressure Controller
- EBC 35 Modulating Pressure Controller
- BDC 8 Modulating Pressure Controller



Listings

UL Listing under Category MCQX is pending (UL Project Number 4786951498) and references the following standards:

- UL 378 Standard for Draft Equipment Edition 4 - Revision Date 2013/09/17
- UL 705 Standard for Power Ventilators Edition 6 - Revision Date 2013/12/17
- CSA C22.2 No. 113-12 Fans and Ventilators Edition 9 - Revision Date 2012/10/01
- CSA3-B255-M81 Standard for Mechanical Flue Gas Exhauster

Warranty

- 2-Year Factory Warranty
- 10-Year Warranty Against Corrosion Perforation

Complete warranty conditions are available from ENERVEX Inc.

Specifications are subject to change without notice.

ENERVEX Inc.
1685 Bluegrass Lakes Parkway
Alpharetta, GA 30004
USA

P: 770.587.3238
F: 770.587.4731
T: 800.255.2923
info@enervex.com
www.enervex.com

ENERVEX®
VENTING DESIGN SOLUTIONS

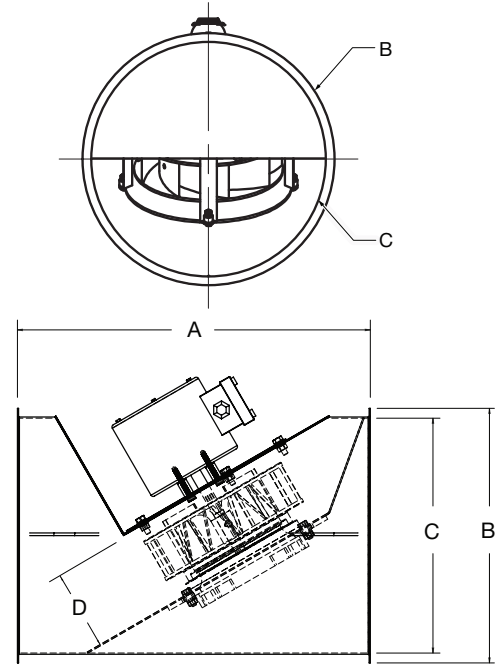
ENERVEX® TDF 160-250 POWER VENTER

3912521 03.16

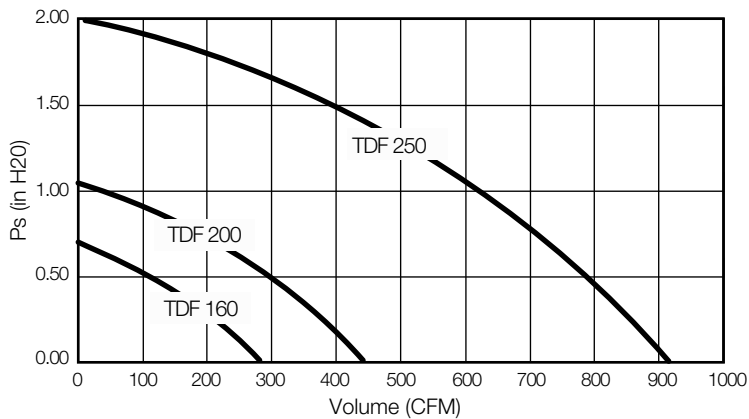
Product Information

Specifications

Model	TDF 160	TDF 200	TDF 250
Discharge	Horizontal / Vertical		
Fan Type	Centrifugal Impeller		
Motor Type	Electronically Commutated, Permanent Magnet		
Voltage	VAC 1x120		
RPM	2000		
Amps	A .52	.80	1.6
Power Ratings	HP / kW .12 / .11	.19 / .17	.25 / .35
Weight	lbs / kg 38 / 17	45 / 20	61 / 28
Dimensions	A Ø in / mm 18 / 458	21 / 534	24 / 610
	B Ø in / mm 13 / 325	15 / 375	17 / 425
	C Ø in / mm 12 / 300	14 / 350	16 / 400
Connection	12" V-Band	14" V-Band	16" V-Band
Variable Speed Motor	Yes	Yes	Yes
Temperature Rating	1400°F / 760°C		



Capacity



Specifications are subject to change without notice.

ENERVEX Inc.
1685 Bluegrass Lakes Parkway
Alpharetta, GA 30004
USA

P: 770.587.3238
F: 770.587.4731
T: 800.255.2923
info@enervex.com
www.enervex.com

ENERVEX®
VENTING DESIGN SOLUTIONS