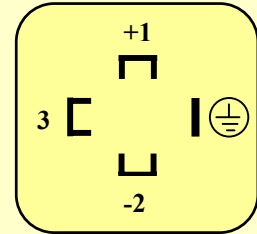


# Reliable easy to install pressure transducer for GAULIN homogenisers



Electrical connection

UB+ = Pin 1

0V = Pin 2

24VDC

Stainless Steel: 1.4571

Sensor element: Ceramic

Max.temperatures:

Product: -20°...+100 °C

Ambient: - 0°...+ 70 °C

CIP: 140 °C

Pressure range: 0 - 100 bar

0 - 400 bar

0 - 600 bar

0 -1000 bar

Pressure limitation: 1,5 x measuring range

Accuracy class: 1,0

Repeatability: +/- 0,15% F.S.

Linearisation : +/- 0,15% F.S

Temp. Compensation range: -25..... 85°C

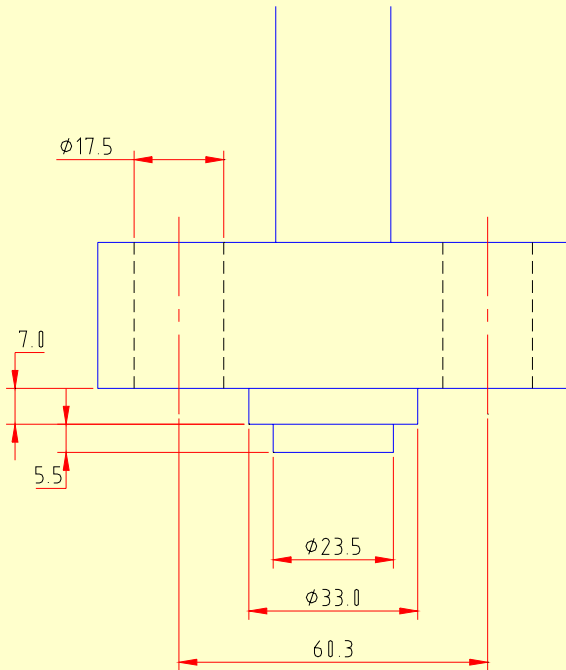
Protection: IP 65

Output: 4-20 mA

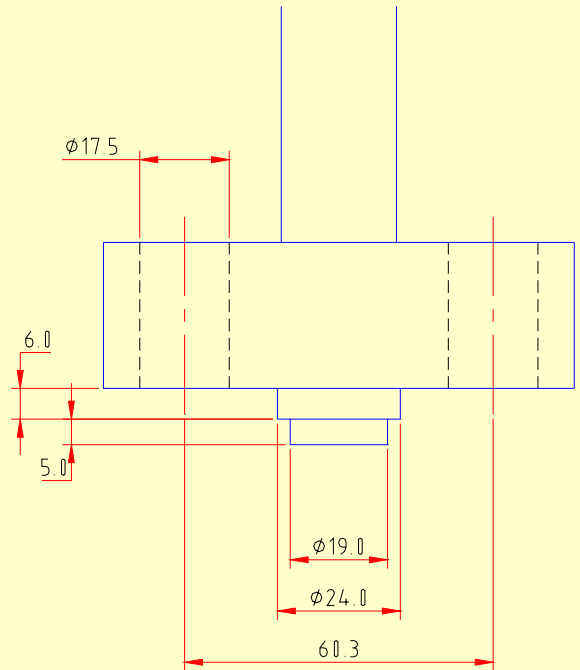
Power supply: 24 VDC



- 4 digit LED display.
- Selectable decimal point setting.
- Display range -1999.....9999.
- Accuracy 0,2% of the measuring range.
- No additional power required, operates with the 24 VDC 4- 20 mA connection of the pressure transducer.
- Maximum load 60mA.
- Measuring sequence adjustable from 3 readings/second up to 25,5 seconds.
- HI/LO measuring range failure indication.
- Programming by means of 2 integrated buttons.
- Protection IP65
- Operating temperature 0....+60 °C
- Storage temperature -30....+80 °C



Pressure gauge connection



Jensen connection

Manufactured by:

**BOS** HOMOGENISERS b.v.