



Progressive cavity pump with crushing blades



C.S.F. Inox S.p.A. Strada per Bibbiano, 7 - 42027 Montecchio E. (RE) - ITALY EU
Ph +39.0522.869911 r.a. - Fx +39.0522.865454 / 866758 - csfitalia@csf.it - www.csf.it
Export Department • Commercial Étranger • Comercial Extranjero
Ph +39.0522.869922 - Fx +39.0522.869841 - csfexport@csf.it - www.csf.it

All the instructions, data and representations (in whatever way executed) listed in this publication are indicative and do not bind. C.S.F. does not stand surety or undertake any obligation for the utilisation of this document and for the information contained. In particular, it does not guarantee against omissions or errors of the data and drawings here indicated.
Notice that the technical specifications, information and representations in this document are merely indicative and approximate. C.S.F. INOX reserves the right at any moment and without notice to modify the data, drawings and information indicated in this document.

cod. DCATMTGB ed. 11/14

PROGRESSIVE CAVITY PUMPS WITH CRUSHING BLADES

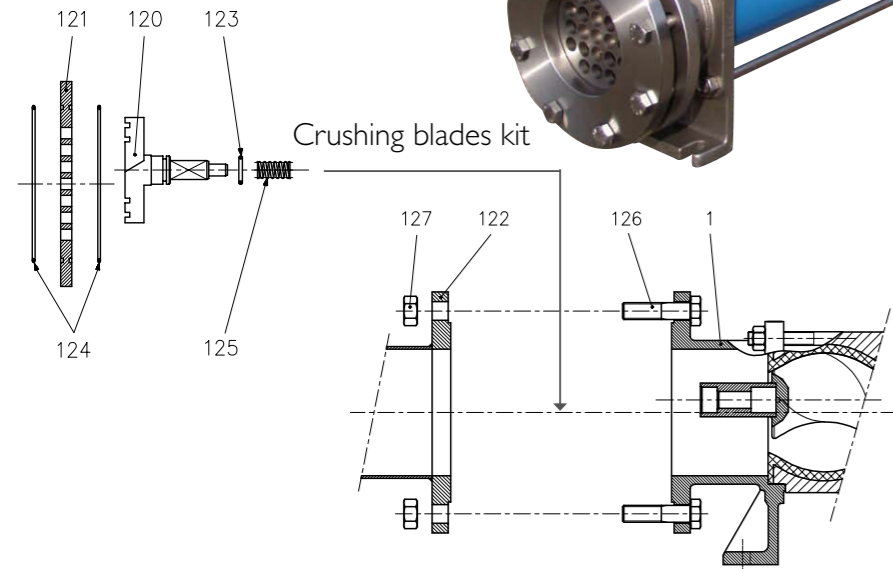
For crushing your products containing soft or fibrous components (fruit and/or vegetables), C.S.F. Inox has designed the right solution for you.

By using crushing blades mounted on the rotor with a disc having holes of different sizes, the consistency of the mashed product can vary.

The great advantage of this device is to avoid the need for macerating equipment after the pump.



Available sizes:
 MC-MCR 80;
 MC-MCR 100;
 MC-MCR 125;
 MC-MCR 150.

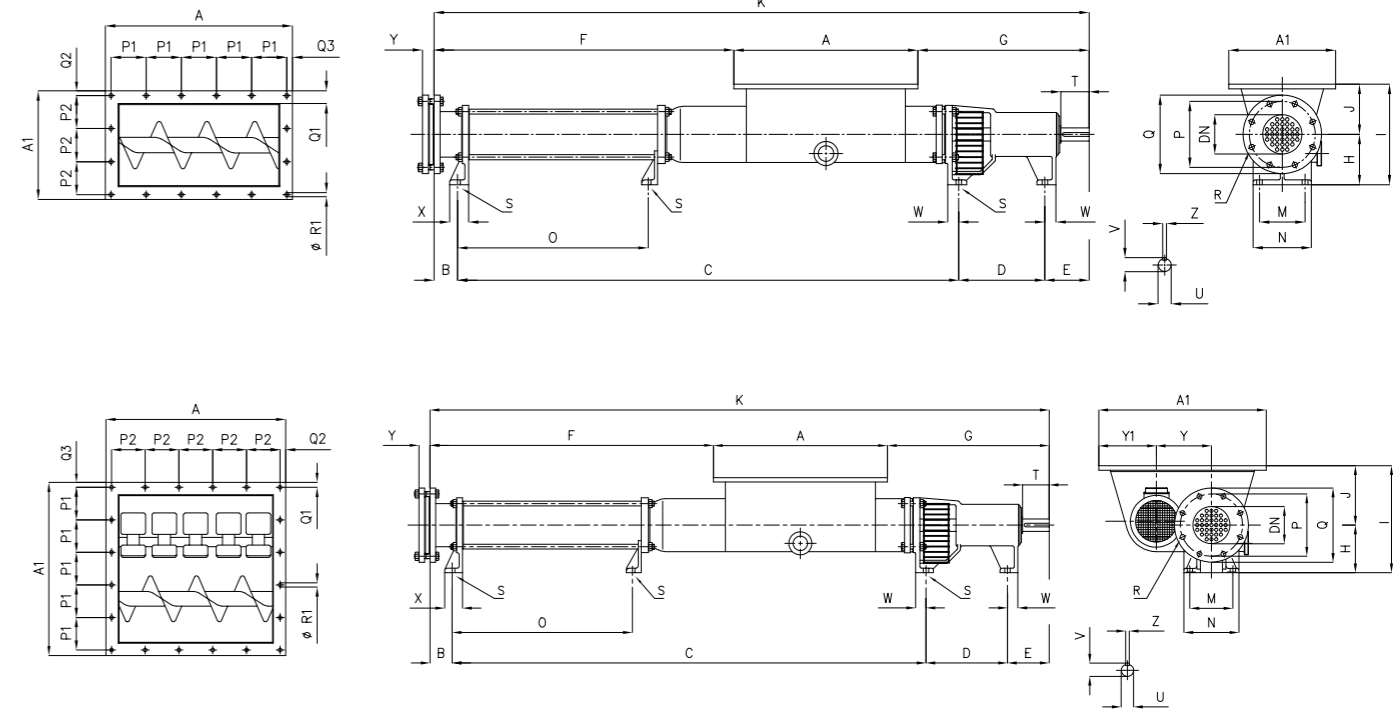


CRUSHING BLADES KIT

When necessary, you can easily equip the pump with the crushing blade kit, after having fixed a bush into the rotor head.

127	Nut	8	AISI 304
126	Bolt	8	AISI 304
125	Spring	1	AISI 316
124	O-ring	2	NBR
123	O-ring	1	NBR
122	Flange for crusher	1	AISI 304
121	Perforated disc	1	M 340
120	Crushing blades	1	M 340
1	Discharge port	1	CF8
Pos.	Denomination	Q.ty	Material

MCN & MCRN WITH CRUSHING BLADES

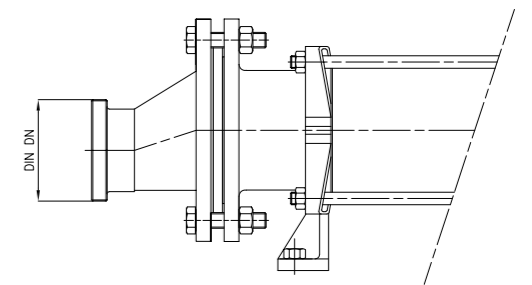


OVERALL DIMENSIONS

Dimensions not bindingtive

PUMP MODEL	DIN DN	B	C	D	E	F	G	K	H	J	I	M	N	O	DN	P	Q	R	no. holes	S	T	U	V	Z	X	Y	Y1	W
MCN 80-2	80	51,5	1215	222	124	750	416	1652	140	140	280	115	155	458	100	180	220	18	8	14	75	35	38	10	39	35	-	34
MCRN 80-2	80	51,5	1215	222	124	750	416	1652	140	180	320	115	155	458	100	180	220	18	8	14	75	35	38	10	39	160	228	34
MCN 80-4	80	51,5	1737	222	124	1272	416	2174	140	140	280	115	155	980	100	180	220	18	8	14	75	35	38	10	39	35	-	34
MCRN 80-4	80	51,5	1737	222	124	1272	416	2174	140	180	320	115	155	980	100	180	220	18	8	14	75	35	38	10	39	160	228	34
MCN 100-2	100	75	1595,5	274	141	954,5	545	2085,5	160	160	320	145	185	606	125	210	250	18	8	18	90	42	45	12	60	37	-	35
MCRN 100-2	100	75	1595,5	274	141	954,5	545	2085,5	160	200	360	145	185	606	125	210	250	18	8	18	90	42	45	12	60	185	195	35
MCN 100-4	100	75	2224,5	274	141	1583,5	545	2714,5	160	160	320	145	185	1235	125	210	250	18	8	18	90	42	45	12	60	37	-	35
MCRN 100-4	100	75	2224,5	274	141	1583,5	545	2714,5	160	200	360	145	185	1235	125	210	250	18	8	18	90	42	45	12	60	185	195	35
MCN 125-2	100	81	2059,5	318	167	1243,5	627,5	2627	180	180	360	170	215	797,5	150	240	285	22	8	18	110	55	59	16	65	37	-	40
MCRN 125-2	100	81	2059,5	318	167	1243,5	627,5	2627	180	200	380	170	215	797,5	150	240	285	22	8	18	110	55	59	16	65	210	222	40
MCN 125-4	100	81	2870,5	318	167	2056	627,5	3439,5	180	180	360	170	215	1608,5	150	240	285	22	8	18	110	55	59	16	65	37	-	40
MCRN 125-4	100	81	2870,5	318	167	2056	627,5	3439,5	180	200	380	170	215	1608,5	150	240	285	22	8	18	110	55	59	16	65	210	222	40
MCN 150-1S	150	114	1894	298	177	1073	650	2480,5	200	200	400	200	250	519	200	295	340	22	8	22	110	55	59	16	90	42	-	50
MCRN 150-1S	150	114	1894	298	177	1073	650	2480,5	200	250	450	200	250	519	200	295	340	22	8	22	110	55	59	16	90	262	266	50
MCN 150-2	150	114	2394	298	177	1573	650	2980,5	200	200	400	200	250	1019	200	295	340	22	8	22	110	55	59	16	90	42	-	50
MCRN 150-2	150	114	2394	298	177	1573	650	2980,5	200	250	450	200	250	1019	200	295	340	22	8	22	110	55	59	16	90	262	266	50

PUMP MODEL	A	A1	P1	P2	Q1	Q2	Q3	R1	no. holes
MCN 80-2	486	326	113	146	43	17	17	13	12
MCRN 80-2	486	580	110	113	43	17	15	13	18
MCN 80-4	486	326	113	146	43	17	17	13	12
MCRN 80-4	486	580	110	113	43	17	15	13	18
MCN 100-2	586	340	110	103	43	15	18	13	16
MCRN 100-2	586	564	106	110	43	18	16	13	20
MCN 100-4	586	340	110	103	43	15	18	13	16
MCRN 100-4	586	564	106	110	43	18	16	13	20
MCN 125-2	756	420	102	96	53	18	21	18	22
MCRN 125-2	756	642	120	102	53	21	21	16	24
MCN 125-4	756	420	102	96	53	18	21	18	22
MCRN 125-4	756	642	120	102	53	21	21	16	24
MCN 150-1S	760	510	102	92	53	25	23	18	24
MCRN 150-1S	760	782	92	102	55	23	23	18	30
MCN 150-2	760	510	102	92	53	25	23	18	24
MCRN 150-2	760	782	92	102	55	23	23	18	30



DIN 11851 DISCHARGE PORT EXEC.