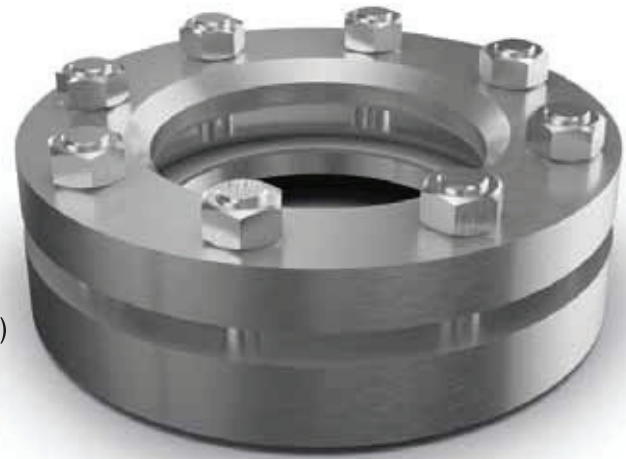


7.1 Sightglass

acc. DIN 28120

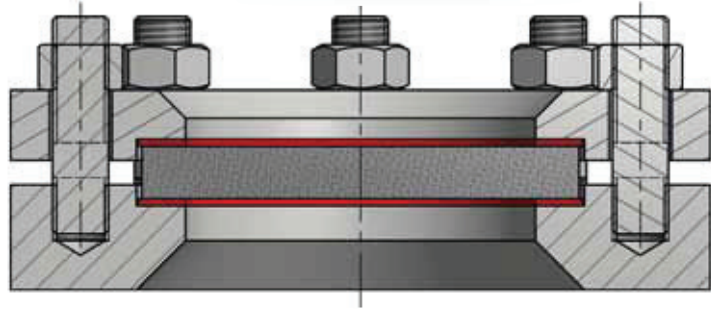
Standard design

- Materials: 1.4571, 1.4404 (welding flange) 1.4541 (cover flange)
- With studs (A2-70) and nuts (A2)
- Gaskets: Klingersil (C-4400)
- With Borosilicatglass-pane acc. DIN 7080
- Pressure rating: 10bar/16bar



Options

- Materials: 1.4435, 1.4539, 1.4529, 1.4462, 1.4429, HC-22, HC-276, HC-2000, etc.
- Other glass materials
- Other Gasket materials



Article No.	NW	MAWP [bar]	Weight [kg]	Glass pane [mm]	Price per piece in EUR (loose)	Centrically welded Price in EUR
200 50	50	16	5,5	Ø 100 x 15		
200 80	80	10	6,0	Ø 125 x 15		
201 00	100	10	11,0	Ø 150 x 20		
201 25	125	10	14,0	Ø 175 x 20		
201 50	150	10	21,0	Ø 200 x 20		
202 00	200	6	32,0	Ø 250 x 25		
202 10	200	10	33,0	Ø 250 x 30		

Spare parts/Components

Description	NW50 Price in EUR Article No.	NW80 Price in EUR Article No.	NW100 Price in EUR Article No.	NW125 Price in EUR Article No.	NW150 Price in EUR Article No.	NW200 Price in EUR Article No.
weldng flange (loose)	200 503	200 803	201 003	201 253	201 503	202 003
welding flange (centrically welded)	200 503	200 803	201 003	201 253	201 503	202 003
Cover flange	200 505	200 805	201 005	201 255	201 505	202 005
Borosilicatglass-pane DIN 7080	200 501	200 801	201 001	201 251	201 501	202 001 / 202 001 130
Klingersil-gasket	200 502Kli	200 802Kli	201 002Kli	201 252Kli	201 502Kli	202 002Kli
PTFE-gasket	200 502Tef	200 802Tef	201 002Tef	201 252Tef	201 502Tef	202 002Tef

zimmerlin
EDELSTAHL-TECHNIK



Zimmerlin GmbH
Edelstahl-Technik
Frohmannstr. 19
D-79268 Bötzingen

Tel. +49(0)7663-6088-0
Fax +49(0)7663-6088-88
info@zimmerlin.de
www.zimmerlin.de



Stand: Juni 2015