



### Requirements and Solutions

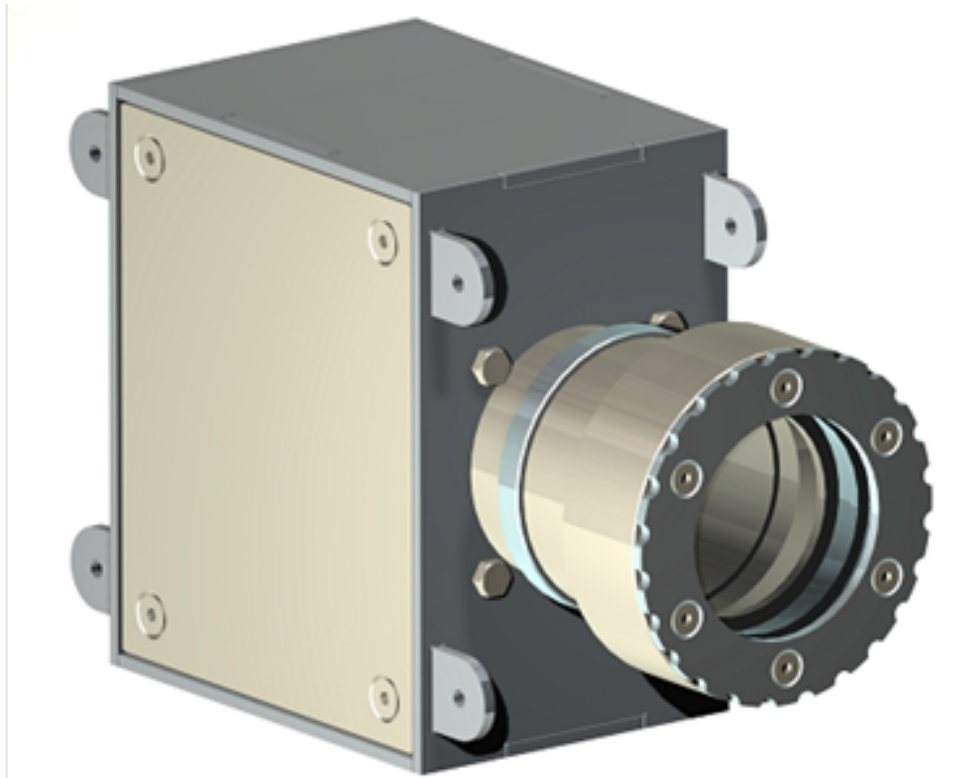
Trust is good, checking is better! True to this motto, the Innocheck LBI series inspects containers for the presence of labels. The term "image processing" stands for a system comprised of a camera and application-specific LED lighting. This series offers many variants and options such as checking the correct label for the product, checking for the presence of the best-by date, checking for crooked labels, and much more. It can be used in labeling machines and for checking wrap-around labels on the conveyor belt.

### Key Features

- Offers a great number of solution options (e.g. label positions) and areas of implementation (in labelers or on conveyor belts)
- Reliable inspection of all label types such as labels made of paper, plastic and film, etc.

### Standard Equipment

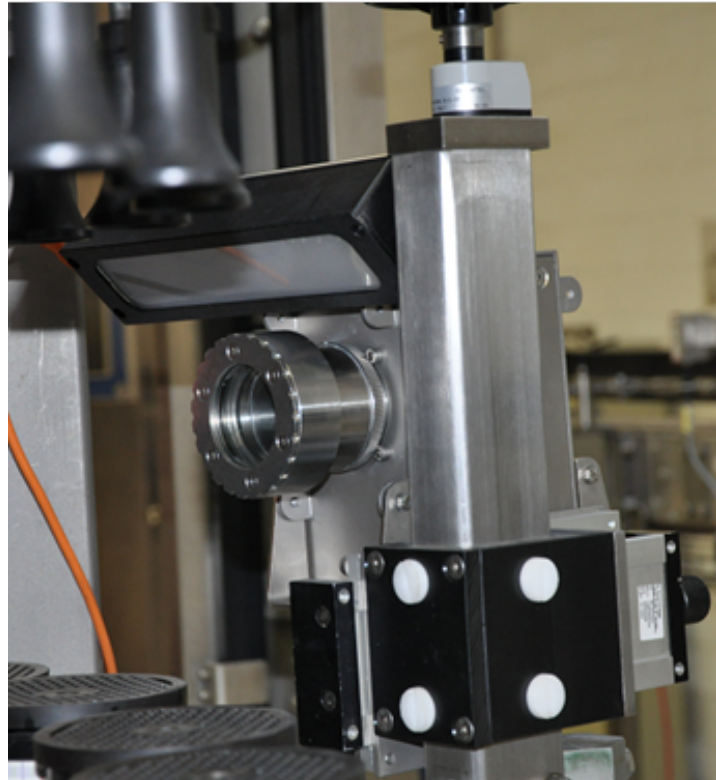
- Hygienically designed camera system
- Application-optimized LED lighting
- Height-adjustable image-capturing system in the machine
- Stand and height adjustment for use on conveyor belts
- Innovative KHS image processing software





#### Advantages

- Many inspection options possible
- Wide range of applications
- Reliable technology
- Detection of black wrap-around labels against dark filling media (e.g. cola)
- Rugged detection unit



#### Options

- Label height check
- Crooked label position
- Twisted labels
- Correct label for the product
- BBD presence

#### Possible Combinations

- Innocheck LPI (label inspection system)
- Innocheck FHC X-ray (fill level check)
- Innocheck FHC gamma (fill level check)

#### Service

- Worldwide service
- Holistic consulting and planning
- ReDiS remote maintenance
- Fast supply of spare parts

#### Technical Data

##### Maximum machine capacity

72,000 containers per hour / 1,200 containers per minute