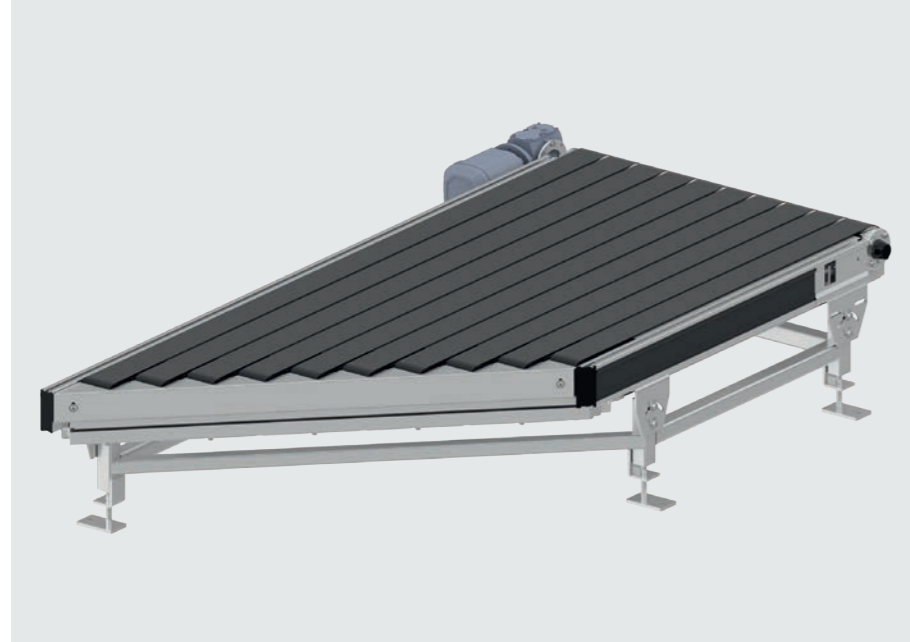
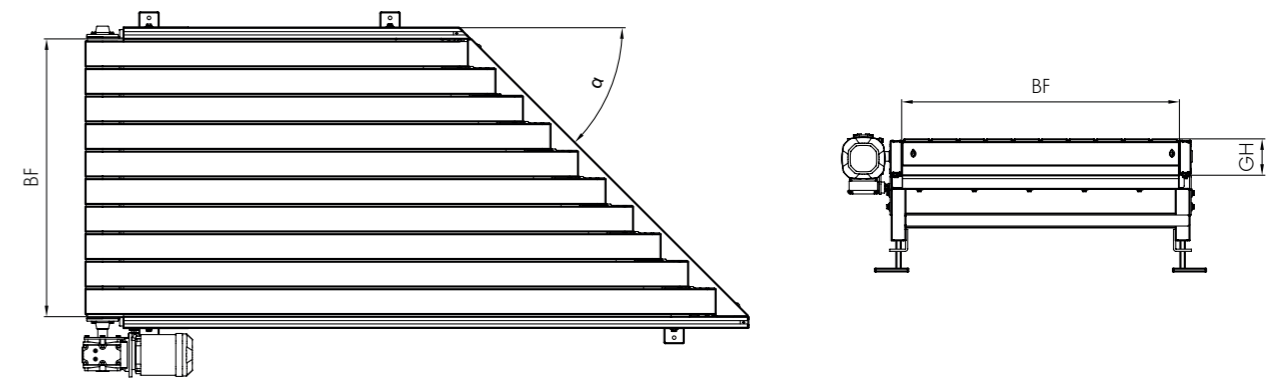


# BM 4430/4445

## Interroll Belt Conveyor Merge



### Dimensions



### Product Description

The belt merge is a belt conveyor with a 30° or 45° angled connecting edge. This conveyor element enables the merging of two conveyor lines at the corresponding angle. With the use of supplementary sorting elements, belt merges also enable the separation of conveyor flows. The conveying belts are available in widths of 90 mm and 40 mm for especially small materials. The belt merge has an especially low overall height at 120 mm.

### Technical data

General technical data	Max. load capacity*	50 kg/m
	Max. load capacity per module*	100 kg
	Conveyor speed*	0.1 to 2.0 m/s
	Incline/decline	Not suitable
	Ambient temperature	-5 to +40 °C
Drive	Rated voltage	400 V / 50 Hz / 3 phase
	Electrical power	0.37 to 1.10 kW
	Motor type	Geared motor 0.37 kW to 1.10kW
	Diameter of drive roller	80 / 120 mm
	Diameter of idler pulley, straight side	80 / 120 mm
Materials	Conveyor belt	Structured surface
		Flame resistant in compliance with DIN EN 20340 (optional)
		Other surfaces on request
	Slider bed	Polymer slide profiles
Side profile	Height side guide	120 mm
		Other side guides on request

\* The combination of maximum values is not always possible.

α	Angle	30°/45°
BF	Between frames	420, 620, 840, 1020 mm others on request
GH	Overall height	200 mm
	Medium length	See application notes, page 121

### Scope of supply

- The module is fully assembled
- Supply incl. 1 sensor
- Please order support stands and end caps separately