

Belt Conveyors & Merges: Angle Merges

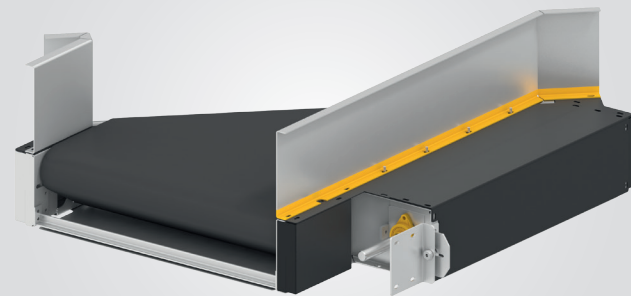
> Merging Diverging Operations

For merging or diverging operations, Interroll has what you are looking for.

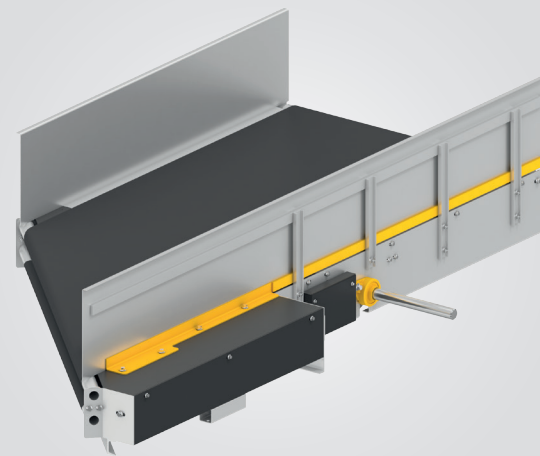
Interroll Angle Merge Conveyors facilitate the merging or diverging of two conveyor lines in a smooth and efficient manner.

Key Features include:

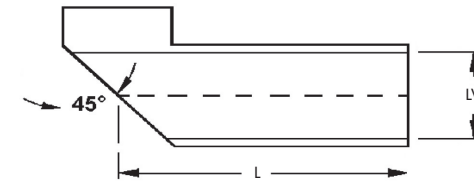
- Low friction angle bar
- 30 (Angle-Flo only) or 45 degree angles
- Spring take-up tension system (Angle-Flo only)
- Quiet operation
- Smooth positive angular transfer of products
- Simple belt tracking system
- Low maintenance
- Heavy duty steel construction
- Transfers small products
- Laced belt for quick change



AMS® (Angle Merge Short)



Angle-Flo



ANGLE MERGES

Merge Model Dimensions

Model	AXL	AX	AXH	AMS®
General Technical Data				
Max Load Capacity	40 lbs/ft	40 lbs/ft	40 lbs/ft	40 lbs/ft
Max Conveyor Load				
Conveyor Speed At CL	75 - 140 fpm	75 - 350 fpm	75 - 350 fpm	75 - 350 fpm
Merge Angle	45 or 30 Degrees	45 or 30 Degrees	45 or 30 Degrees	45 Degree
Direction	Merge / Diverge	Merge / Diverge	Merge / Diverge	Merge / Diverge
Ambient Temperature	5° - 176° F	5° - 176° F	5° - 176° F	5° - 176° F
Drive Data				
Rated Voltage	400V / 50HZ / 3PH	400V / 50HZ / 3PH	400V / 50HZ / 3PH	400V / 50HZ / 3PH
	460V / 60HZ / 3PH	460V / 60HZ / 3PH	460V / 60HZ / 3PH	460V / 60HZ / 3PH
	110V / 220V / 60HZ / 1PH	110V / 220V / 60HZ / 1PH	110V / 220V / 60HZ / 1PH	110V / 220V / 60HZ / 1PH
Power	.5HP - 2HP	.5HP - 5HP	.5HP - 5HP	3HP
Motor Type	Gear Motor	Gear Motor	Gear Motor	Gear Motor
Drive Mount	Shaft Mounted	Shaft Mounted	Shaft Mounted	Shaft Mounted
End Roll Diameter	2 in	2.5 in	3.5 in	6 in
Materials				
Belt Material	Flexam EF 10/2 0+07 Black M2 FR	Flexam EF 10/2 0+07 Black M2 FR	Flexam EF 10/2 0+07 Black M2 FR	Flexam EF 10/2 0+07 Black M2 FR
	Others upon Request	Others upon Request	Others upon Request	Others upon Request
Construction	10 gauge / 3mm	10 gauge / 3mm	10 gauge / 3mm	10 gauge / 3mm
Shaft Size	1" - 1-3/16" 25mm - 30mm	1 7/16" 35mm	1-7/16" - 1-11/16" 35mm - 45mm	1-7/16" 35mm
Finish	RAL DTM	RAL DTM	RAL DTM	RAL DTM
Bearings	Peer MHS	Peer MHS	Peer MHS	Peer MHS
Dimensions				
Frame Height	7 in / 177mm	8.5 in / 216mm	12 in / 216mm	12 in / 216mm
Length (CL) Merge/Diverge	31" / 44"	41" / 57"	54" / 70"	36"
LW Clearance (BSG)	13"	29"	39"	39"
Min TOB Height	7 in / 177mm	8.5 in / 216mm	12 in / 216mm	12 in / 216mm
Side Guards	0" - 12"	0" - 21"	0" - 21"	12" or 21"
Options				
Belt Construction	Vulcanized Belt	Vulcanized Belt	Vulcanized Belt	N/A
Underguarding	Expanded Metal	Expanded Metal	Expanded Metal	
	Solid Metal Pinned	Solid Metal Pinned	Solid Metal Pinned	Solid Metal included
	Plastic Mesh	Plastic Mesh	Plastic Mesh	
Supports	2" Square tubing	2" Square tubing	2" Square tubing	2" Square tubing
	H/S Supports	H/S Supports	H/S Supports	H/S Supports
	Floor Blocks	Floor Blocks	Floor Blocks	Floor Blocks
	Ceiling Hanger	Ceiling Hanger	Ceiling Hanger	Ceiling Hanger
Drip Hands				

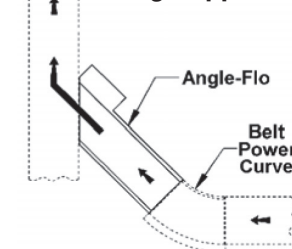
Belt Drive System (Angle Flo only):

The conveyor belt is driven by its bottom side contacting a heavy duty lagged drive roll. Contamination of the belt surface does not effect the conveyor operation. A spring-loaded take-up maintains even belt tension even through changes in loading and temperature.

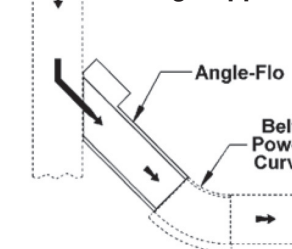


Note: the above dimensions are for Merge units only and represent the shortest length for the conveying width. Diverge units are typically longer. Call the factory for minimum lengths for diverge units. The above models are examples that show the narrowest and widest conveying widths for each frame height.

Merge Application



Diverge Application



Direction of travel

