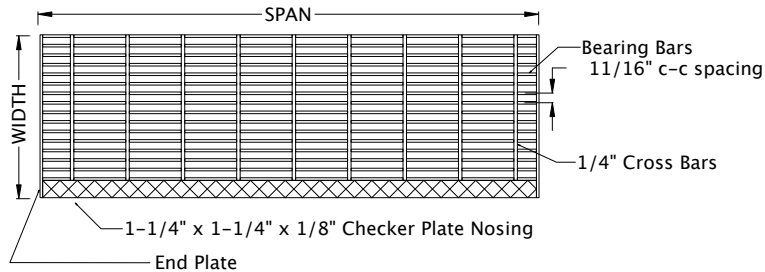


Available Widths	
6-1/4"	9-11/16"
6-15/16"	10-3/8"
7-5/8"	11-1/16"
8-5/16"	11-3/4"
9"	12-7/16"

Available Alloys
Steel
Galvanized Steel
Stainless Steel
Aluminum

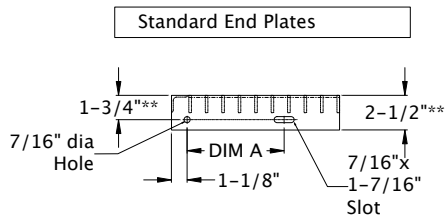


Bearing Bar Options	
1" x 3/16"	Max. Span 36"
1-1/4" x 3/16"	Max. Span 48"
1-1/2" x 3/16"	Max. Span 63"

Swaged or Press-Locked Construction

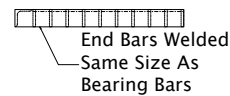
ADA Compliant Spacing

End Plate Options



Width	DIM A
6-15/16"	2-1/2"
and Under	
7-5/8"	4-1/2"
up to 9"	4-1/2"
9-3/4"	7"
and Over	

Trim Banded



\*\*3" End Plates for 1-1/2" or Greater Bearing Bars with 2-1/4" hole location

\*\*3" End Plates for all Aluminum Treads

SlipNOT GRATING TREAD - 11-4

Copyright 2004, The WS Molnar Company  
All Rights Reserved

**SlipNOT**  
Metal Safety Flooring  
2545 Beaufait Street  
Detroit, Michigan 48207  
800/754-7668 Phone  
313/923-4555 Fax  
info@slipnot.com (Email)