

NOTE:

- We recommend the use of a **medium threadlocker** to lock the plug during its reassembly to the hook end of the manual handle sub-assembly.
- During sawing operations, avoid getting chips or filings in the pipes and rinse the pipes thoroughly with the valve open to avoid damaging the seals when the valve is put into service.

8) EEC CONFORMITY

A - Our valves comply with European regulations (EEC) within the limits of use described in paragraph B.

The CE mark on the valve indicates conformity to the following regulations :

CE - 89/336 "Electromagnetic compatibility"
- 97/23 "Pressurized equipment"
- 73/23 "Low pressure"

B - Use limits :

Usage pressure must be lower than 10 bar for all products.

In case of dangerous gas⁽¹⁾ valve diameter (line) must be below 100 mm.

For use outside these limits, please contact our technical service.

⁽¹⁾dangerous gas : group 1 gas, identified by a letter on the label and on the security card of the product :

E (for detonating gas), O (for fuel), F+, F and R10 (flammable), T+ and T (toxic).

For additional information, please see regulation 67/548/EC "Labeling of dangerous products".

9) SPARE PARTS AND ACCESSORIES

Please refer to the general documentation or consult us.

Please consult us in the event of a malfunction.



INSTALLATION GUIDE

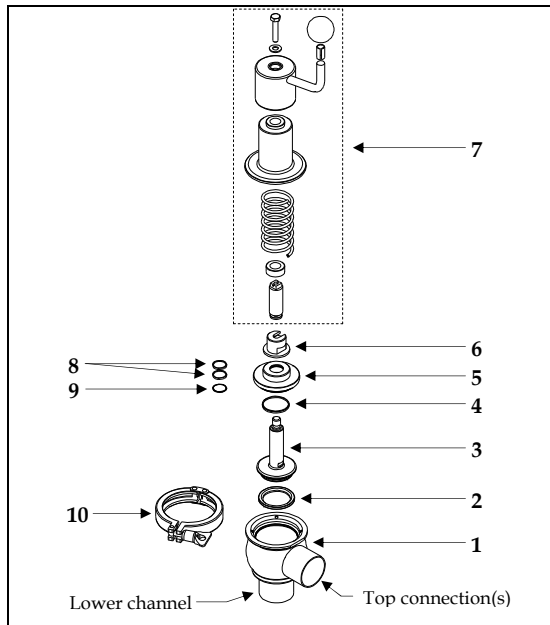
DCX3 & DCX4 MANUAL CHANGEOVER VALVE

www.definox.com

DEFINOX SAS
3 Rue des Papetiers - Z.A.C. de Tabari 2
44190 Clisson - France
☎ : +33 (0)2 28 03 98 50
📠 : +33 (0)2 28 03 88 00

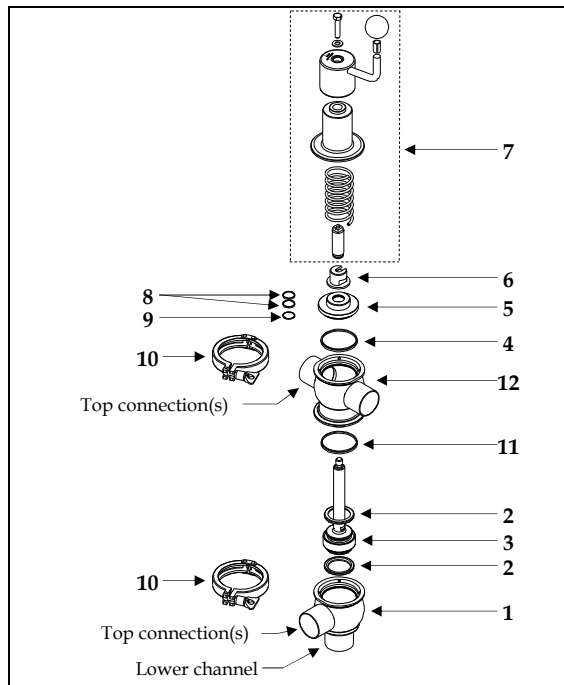
E-mail : info@definox.com

DCX3 MANUAL VALVE



- 1 : DCX3 valve body
- 2 : PFA seal (Qty 2 on DCX4)
- 3 : Piston
- 4 : Seal
- 5 : Seal bearing plate
- 6 : Hook end
- 7 : Manual handle sub-assembly
- 8 : Rings (Qty 2)
- 9 : Seal
- 10 : Clamp (Qty 2 on DCX4)
- 11 : Seal
- 12 : DCX4 valve body

DCX4 MANUAL VALVE



PFA seals are supplied as standard for the piston seals (2), but elastomer seals may be fitted instead. If elastomer seals are used, the piston (3) must be replaced by two or three-part piston.

Follow the fitting and operating instructions carefully. Take account of the actual working conditions and comply with the valve specifications indicated in the DEFINOX catalogue.

1) VALVE IDENTIFICATION

DEFINOX changeover valves have an identification number. You will need this number to identify any the spare parts you may request.

2) USUABLE SEALS

The following seal types can be mounted on your valve :

NEOPRENE

EPDM

SILICON

FOOD GRADE VITON

ACID-RESISTANT VITON

The technical department is at your disposal to help you choose the seal types best suited to your process. Ensure that the grease used is compatible with elastomer seals, particularly EPDM.

3) INSTALLING DCX3 VALVES

Store your valve in its original packaging to prevent damage. Loosen the clamp (10) to separate the shut-off assembly (2-3-4-5-6-7-8-9) from body (1). Make sure the seal (4) is correctly positioned on the seal bearing plate (5) (if not, refit) before welding the body.

4) INSTALLING DCX4 VALVES

Store our valve in its original packaging to prevent damage. Remove the clamps (10) to separate the handle sub-assembly (7) and the body (1) from the assembly (2-3-4-5-6-8-9-11-12). Unscrew the hook end (6) from the piston (3) (fitted with flat areas that simply unscrew.) Remove the seal bearing plate (5) and the piston from the body (12). Fit the body (1-12) to the pipes. Make sure one of the bodies can still be disassembled, thus this body must not be welded.

5) PRECAUTIONS TO BE TAKEN WHEN CARRYING OUT WELDING OF THE BODIES

Adjust the pipes : check the straightness, the out-of-roundness and the offset (play < 0.5 mm), to limit the restrictions created by welding.

Any modification to the valve body for the purpose of welding must be carried out with the agreement of Definox.

Support the pipes by at least 10D of the valve (nominal diameter of valve).

6) ASSEMBLING DCX3 MANUAL VALVES

Make sure the seal bearing surfaces (2) and (4) are clean. Check the position of the seal (4) on the seal bearing plate (5). Fit the shut-off assembly (2-3-4-5-6-7-8-9) in the valve body (1) making sure the seals are not damaged around the part edges. Reassemble the clamp. When using for the first time, lock the handle as normal and check for leaks from the bottom connection or from the top connection(s) and the seal bearing part (small leak inspection port on the lantern).

7) FITTING DCX4 MANUAL VALVES

Make sure the seal bearing surfaces (2-4-11) are clean. Check the seal position (4) on the seal bearing plate (5). Thread the body (12), then the seal bearing plate (5) to the piston (3). Screw the hook end (6) onto the piston using the flat areas. Ensure that the seals are not damaged around the part edges. Position the seal (11) on the body (1). Place the body on the shut-off assembly (2-3-4-5-6-8-9-12) and fit the clamp (10). Position the manual handle sub-assembly (7) in the hook end and fit the clamp (10). When using for the first time, tighten the handle as normal and check for leaks around the bottom connection. Unlock the handle, lock in the up position and check for leaks from the top connection(s) and the seal bearing part (small leak inspection port on the lantern).