

## ID air induction nozzles

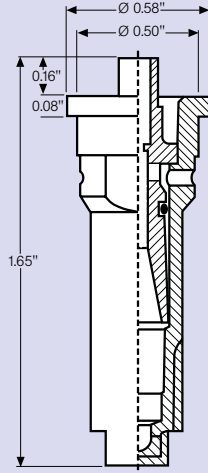
Spray angle: 80°, 110°  
 90°, 120° available upon request  
 Material: POM, POM/Ceramic



ID



ID-C

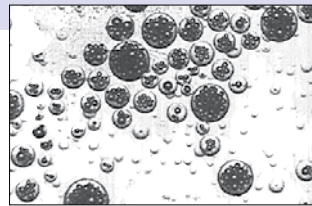


### Features

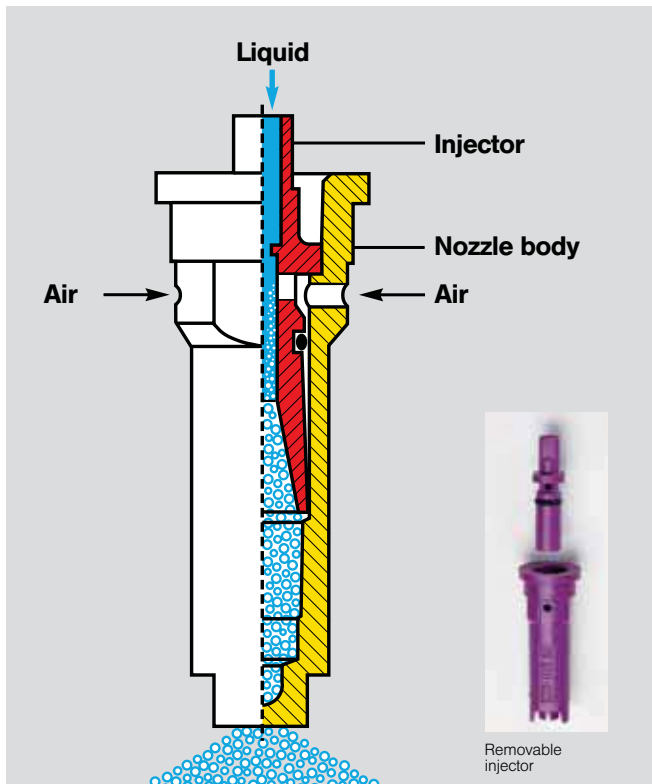
- Venturi air induction flat spray nozzle
- **Extremely low drift potential**, even for higher pressures
- Extra coarse to coarse droplets
- Uniform, large droplet size
- Best performance range 30-115 psi  
 40-290 psi for orchard/vineyard
- Use with IS end nozzle for boom ends
- Fits 10 mm caps, part number Y8253049 series

### Range of application

Herbicides, fungicides, insecticides, liquid fertilizers, plant growth regulators



Aeration effect



Removable injector

### Main benefits of ID nozzles

- Sturdy design
- Easily removable injector for cleaning
- Hard wearing – non clogging
- Very good deposition structure and crop canopy penetration

# Spray table for ID air induction nozzles

ASABE S-572	psi	Capacity per nozzle		Gallons/Acre								
		gpm	oz/min	4 mph	5 mph	6 mph	7 mph	8 mph	10 mph	12 mph	14 mph	
<b>ID 80-01 110-01 (50/100 M)</b>	C	40	0.1	13	7.4	5.9	5.0	4.2	3.7	3.0	2.5	2.1
	C	50	0.11	14	8.2	6.5	5.4	4.7	4.1	3.3	2.7	2.3
	C	60	0.12	15	8.9	7.1	5.9	5.1	4.5	3.6	3.0	2.5
	C	70	0.13	17	9.7	7.7	6.4	5.5	4.8	3.9	3.2	2.8
	C	80	0.14	18	10.4	8.3	6.9	5.9	5.2	4.2	3.5	3.0
	C	90	0.15	19	11.0	8.9	7.4	6.4	5.6	4.5	3.7	3.2
<b>ID 80-015 110-015 (50/100 M)</b>	C	100	0.16	20	11.9	9.5	7.9	6.8	5.9	4.8	4.0	3.4
	VC	30	0.13	17	9.7	7.7	6.4	5.5	4.8	3.9	3.2	2.8
	VC	40	0.15	19	11.1	8.9	7.4	6.4	5.6	4.5	3.7	3.2
	C	50	0.17	22	12.6	10.1	8.4	7.2	6.3	5	4.2	3.6
	C	60	0.18	23	13.4	10.7	8.9	7.6	6.7	5.3	4.5	3.8
	C	70	0.2	26	14.9	11.9	9.9	8.5	7.4	5.9	5	4.2
<b>ID 80-02 110-02 (50 M)</b>	C	80	0.21	27	15.6	12.5	10.4	8.9	7.8	6.2	5.2	4.5
	C	90	0.23	29	17.7	13.7	11.4	9.8	8.5	6.8	5.7	4.9
	C	100	0.24	31	17.8	14.3	11.9	10.2	8.9	7.1	5.9	5.1
	VC	30	0.17	22	12.6	10.1	8.4	7.2	6.3	5	4.2	3.6
	VC	40	0.2	26	14.9	11.9	9.9	8.5	7.4	5.9	5	4.2
	VC	50	0.22	28	16.3	13.1	10.9	9.3	8.2	6.5	5.4	4.7
<b>ID 80-025 110-025 (50 M)</b>	C	60	0.24	31	17.8	14.3	11.9	10.2	8.9	7.1	5.9	5.1
	C	70	0.26	33	19.3	15.4	12.9	11	9.7	7.7	6.4	5.5
	C	80	0.28	36	21	16.6	13.9	11.9	10.4	8.3	6.9	5.9
	C	90	0.3	38	22	17.8	14.9	12.7	11.1	8.9	7.4	6.4
	C	100	0.32	41	24	19	15.8	13.6	11.9	9.5	7.9	6.8
	VC	30	0.22	28	16.3	13.1	10.9	9.3	8.2	6.5	5.4	4.7
<b>ID 80-03 110-03 (50 M)</b>	VC	40	0.25	32	18.6	14.9	12.4	10.6	9.3	7.4	6.2	5.3
	VC	50	0.28	36	21	16.6	13.9	11.9	10.4	8.3	6.9	5.9
	VC	60	0.31	40	23	18.4	15.3	13.2	11.5	9.2	7.7	6.6
	VC	70	0.33	42	25	19.6	16.3	14	12.3	9.8	8.2	7
	VC	80	0.35	45	26	21	17.3	14.9	13	10.4	8.7	7.4
	C	90	0.38	49	28	23	18.8	16.1	14.1	11.3	9.4	8.1
<b>ID 80-04 110-04 (50 M)</b>	C	100	0.4	51	30	24	19.8	17	14.9	11.9	9.9	8.5
	VC	30	0.26	33	19.3	15.4	12.9	11	9.7	7.7	6.4	5.5
	VC	40	0.3	38	22	17.8	14.9	12.7	11.1	8.9	7.4	6.4
	VC	50	0.34	44	25	20	16.8	14.4	12.6	10.1	8.4	7.2
	VC	60	0.37	47	27	22	18.3	15.7	13.7	11	9.2	7.8
	VC	70	0.4	51	30	24	19.8	17	14.9	11.9	9.9	8.5
<b>ID 80-05 110-05 (50/30 M)</b>	VC	80	0.42	54	31	25	21	17.8	15.6	12.5	10.4	8.9
	C	90	0.45	58	33	27	22	19.1	16.7	13.4	11.1	9.5
	C	100	0.47	60	35	28	23	19.9	17.4	14	11.6	10
	EC	30	0.35	45	26	21	17.3	14.9	13	10.4	8.7	7.4
	VC	40	0.4	51	30	24	19.8	17	14.9	11.9	9.9	8.5
	VC	50	0.45	58	33	27	22	19.1	16.7	13.4	11.1	9.5
<b>ID 80-06 110-06 (50/30 M)</b>	VC	60	0.49	63	36	29	24	21	18.2	14.6	12.1	10.4
	VC	70	0.53	68	39	31	26	22	19.7	15.7	13.1	11.2
	VC	80	0.57	73	42	34	28	24	21	16.9	14.1	12.1
	VC	90	0.6	77	45	36	30	25	22	17.8	14.9	12.7
	C	100	0.63	81	47	37	31	27	23	18.7	15.6	13.4
	EC	30	0.43	55	32	26	21	18.2	16	12.8	10.6	9.1
<b>ID 80-08 110-08 (50/30 M)</b>	EC	40	0.5	64	37	30	25	21	18.6	14.9	12.4	10.6
	EC	50	0.56	72	42	33	28	24	21	16.6	13.9	11.9
	VC	60	0.61	78	45	36	30	26	23	18.1	15.1	12.9
	VC	70	0.66	84	49	39	33	28	25	19.6	16.3	14
	VC	80	0.71	91	53	42	35	30	26	21	17.6	15.1
	VC	90	0.75	96	56	45	37	32	28	22	18.6	15.9
<b>ID 80-09 110-09 (50/30 M)</b>	VC	100	0.79	101	59	47	39	34	29	23	19.6	16.8
	EC	30	0.52	67	39	31	26	22	19.3	15.4	12.9	11
	EC	40	0.6	77	45	36	30	25	22	17.8	14.9	12.7
	EC	50	0.67	86	50	40	33	28	25	19.9	16.6	14.2
	VC	60	0.73	93	54	43	36	31	27	22	18.1	15.5
	VC	70	0.79	101	59	47	39	34	29	23	19.6	16.8
<b>ID 80-10 110-10 (50/30 M)</b>	VC	80	0.85	109	63	50	42	36	32	25	21	18
	VC	90	0.9	115	67	53	45	38	33	27	22	19.1
	VC	100	0.95	122	71	56	47	40	35	28	24	20
	EC	30	0.70	90	52	42	34.6	29.8	26	20.8	17.4	14.8
	EC	40	0.80	102	60	48	39.6	34	29.8	23.8	19.8	17
	EC	50	0.90	116	66	54	44	38.2	33.4	26.8	22.2	19
<b>ID 80-11 110-11 (50/30 M)</b>	EC	60	0.98	126	72	58	48	42	36.4	29.2	24.2	20.8
	EC	70	1.06	136	78	62	52	44	39.4	31.4	26.2	22.4
	VC	80	1.14	146	84	68	56	48	42	33.8	28.2	24.2
	VC	90	1.20	154	90	72	60	50	44	35.6	29.8	25.4
	VC	100	1.26	162	94	74	62	54	46	37.4	31.2	26.8



Matching IS air induction nozzle, see page 18.

### ASABE S-572 Droplet size classification

VF	Very fine
F	Fine
M	Medium
C	Coarse
VC	Very coarse
EC	Extremely coarse

Classifications are subject to change

- Spray pressure measured at the nozzle tip.
- The stated gallons per acre rates apply to water.
- Check your nozzle flow rates prior to each spray season.
- Make sure that all nozzles have the same designed flow rate.

### Sample order

Type + spray angle + nozzle size + material = order number  
 ID 110° 025 (POM) = ID 110-025  
 ID 110° 025 C (Ceramic) = ID 110-025C