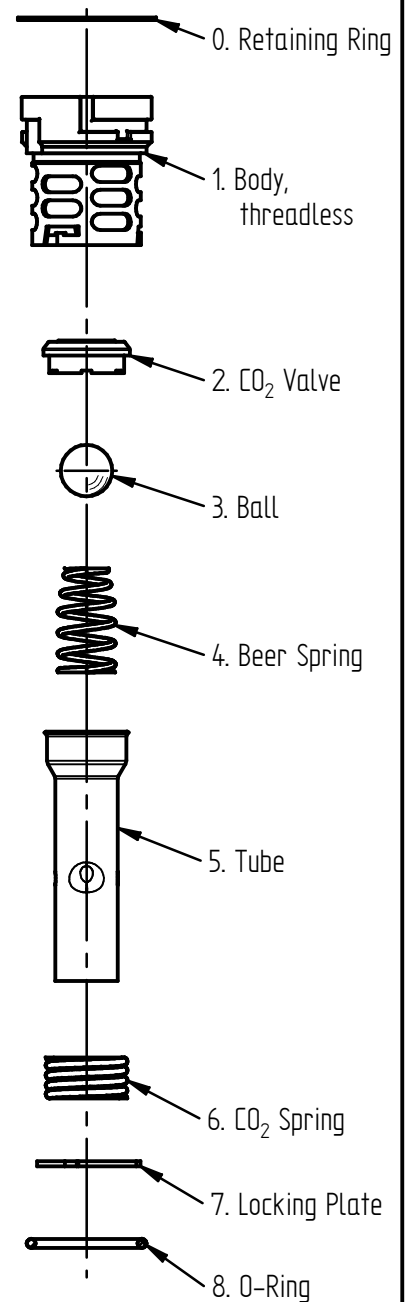
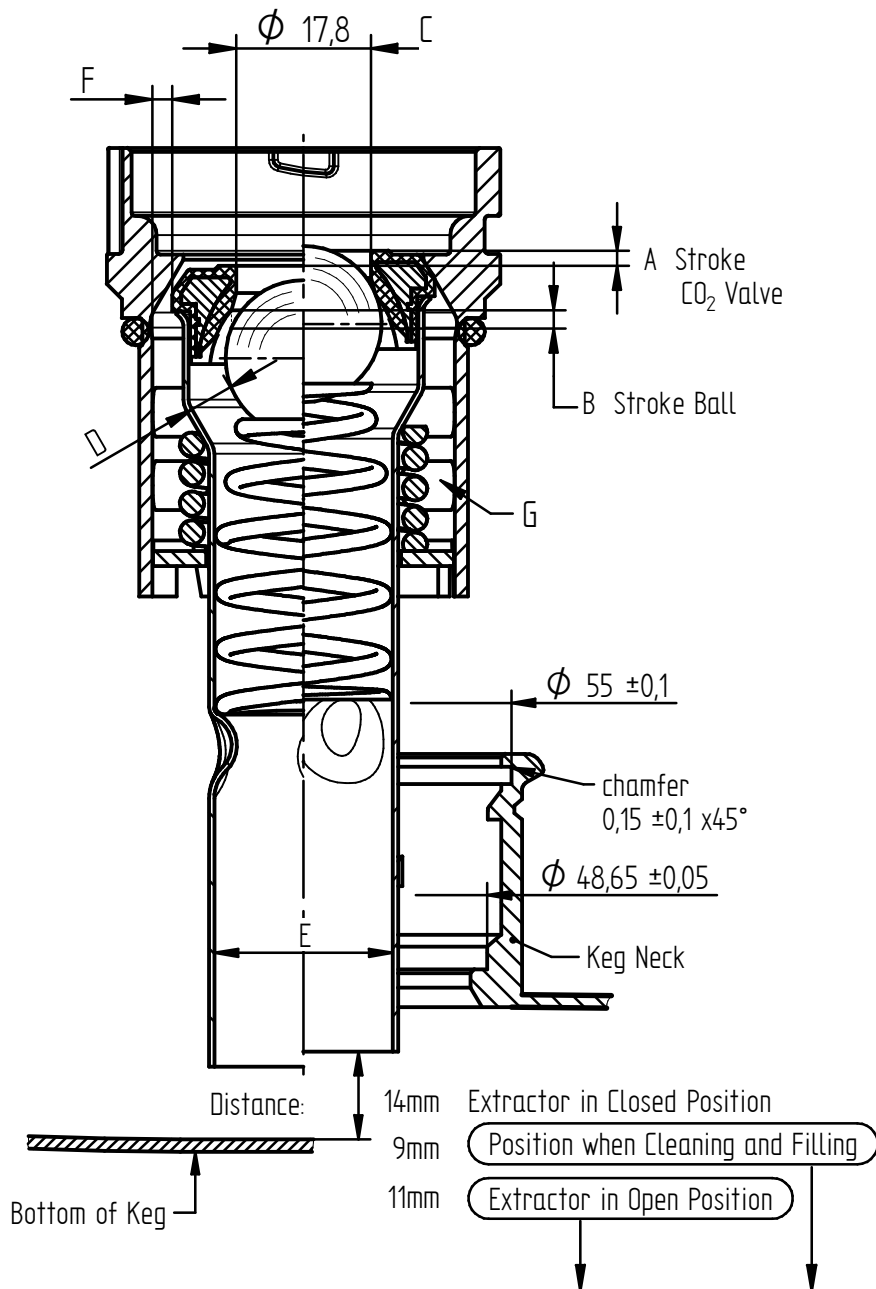


This drawing is the property of Dispense Systems International. If in doubt, please ask. Samples are required after each revision.



I	Stroke	CO <sub>2</sub> Valve + Tube	Parts 2+5 - Part 1	A	3mm	max. 4mm-6mm
		Ball	Part 3 - Part 2	B	4mm	6,5mm-8mm
II	Passages through Inner Tube		In Part 2 Ø17,8	C		250mm <sup>2</sup>
			Part 3 - Part 5	D		260mm <sup>2</sup>
			In Part 5 Ø23,6	E		440mm <sup>2</sup>
III	Passages through Outer Tube		Part 1 - Part 2	F		330mm <sup>2</sup>
			Part 1	G		1660mm <sup>2</sup>
IV	Temperature Resistance	Short-time 160 °C				

PRODUCT		REMARKS		ROUGHNESS	SCALE	WEIGHT VOLUME	
					MATERIAL		
			DATE	NAME	TITLE		
			DRAWN	26.02.2013	kunze	Technical Data Sheet ET-W BD	
			APPR.				
			NORM				
			PROD. DEV.	DE			
				PROJ. METHOD	FORMAT	DRAWING NUMBER	SHEET
				REPL.		A4	D-910426
Δ	ALTERATIONS	DATE	NAME	ORIGIN	REPL.	REPL. BY	2 SHTS.