

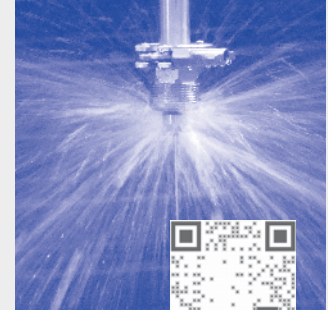


# Pop-up rotating cleaning nozzles “PopUp Whirly” Series 5P2 / 5P3

**NEW**

## Series 5P2 / 5P3

When a certain fluid pressure is reached, the rotating of the PopUp Whirly is automatically extended from the enclosure. These free-spinning rotating nozzles can be installed flush in the tank wall. They are also suitable for cleaning pipes and for applications that use foam. They are of particular interest for applications in the food and beverage industry as well as for the pharmaceutical and chemical industry.



**To see video**

Scan the QR-code  
or go to:  
[www.lechlerusa.com](http://www.lechlerusa.com)



**Max. tank diameter [ft]**

0

5

10

15

20

25

30



### Materials

Stainless steel AISI 316L, stainless steel AISI 316Ti (spring), stainless steel AISI 316 (snap ring), PEEK (slide-bearing), FKM (O-ring)



### Max. temperature

284°F / 140°C



### Recommended operating pressure

30 psi, 5P2: opening pressure approx. 14.5 psi; closing pressure approx. 7 psi, 5P3: opening pressure approx. 13 psi, closing pressure approx. 7 psi



### Installation

Operates in every direction



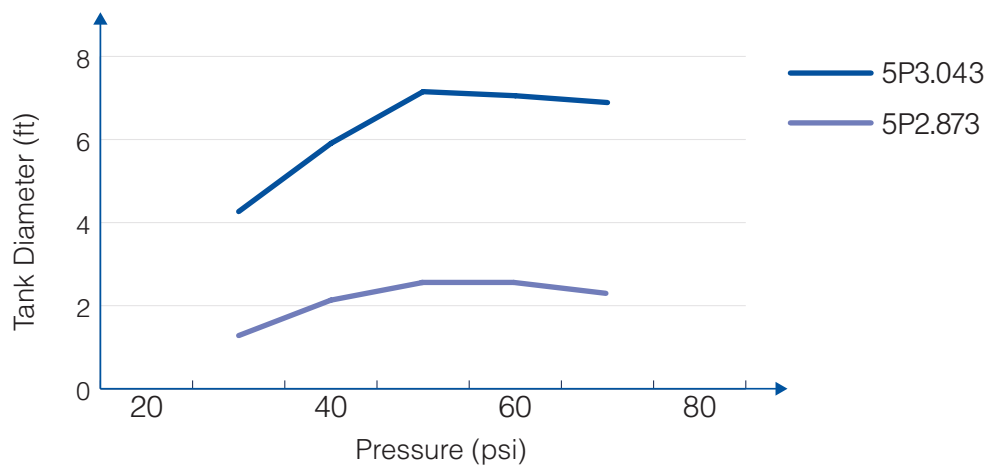
### Filtration

Line strainer with a mesh size of 0.3 mm/50 Mesh



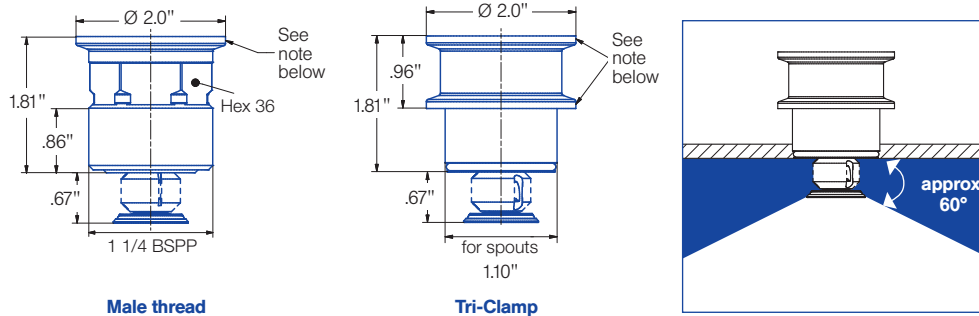
### Bearing

Sleeve bearing made of PEEK





Overview of the tank diameter, depending upon the pressure of series 500.382 / 500.453

## Series 5P2



Male thread

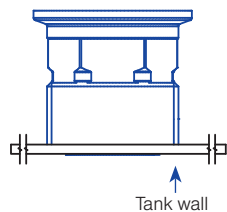
Tri-Clamp

| Spray angle<br> | Ordering no.     | Tank connection  |           | Free Passage (in.) | Flow Rate (Gallons Per Minute) |       |        | Max. tank diameter [ft] |
|--|------------------|------------------|-----------|--------------------|--------------------------------|-------|--------|-------------------------|
|  |                  | 1 1/4" Male BSPP | Tri Clamp |                    | liters per minute              |       |        |                         |
|  |                  |                  |           |                    | 15 psi                         | 2 bar | 40 psi |                         |
|               | 5P2. 873. 1Y. AP | ○                | -         | .04                | 2.8                            | 15.0  | 5      | 2.6                     |
|  | 5P2. 873. 1Y. 00 | -                | ○         | .04                | 2.8                            | 15.0  | 5      | 2.6                     |
|  | 5P2. 923. 1Y. AP | ○                | -         | .04                | 3.7                            | 20.0  | 6      | 3.3                     |
|  | 5P2. 923. 1Y. 00 | -                | ○         | .04                | 3.7                            | 20.0  | 6      | 3.3                     |

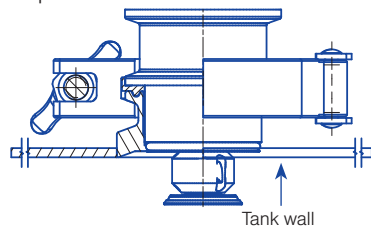
The maximum tank diameter shown above applies for the recommended operating pressure and is indicative only. The cleaning result is also affected by the type of soiling.

## Nozzle installation

With thread in idle position



With Tri-Clamp in operating position



## Information on operation

- Operation with compressed air purge only for short-term usage. Operation above the recommended operating pressure means higher wear and smaller droplets. This might have adverse effects on the cleaning result.
- The liquid inlet connection to this nozzle uses a standard 1-1/2" Tri-Clamp ASME BPE mating ferrule, gasket and clamp. The nozzle mounting connection to the vessel requires a special DIN 32676-A DN40 ferrule that is .846" long. This item is not included with the nozzle and must be ordered separately. Please use order no. 095.023.1Y.00.01.0.