

Air-Tight Blast Gate Valves

Ruwac's air-tight blast gates are perfect for central and silo vacuum systems where controlled industrial dust extraction is needed. Our blast gates are kept in the closed position until a vacuum source is needed, thus increasing the efficiency of the vacuum system by closing off inactive segments by increasing vacuum pressure at other active areas. The average blast gate -- whether manually or automatically activated -- does not, as they leak air and do not completely preserve the vacuum suction for actively open vacuum ports. With Ruwac's air-tight blast gates, removing even the smallest dust particles is possible!

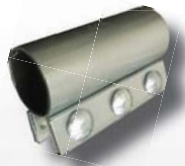


- For use with central and silo vacuum systems
- Air-tight across the blast gate up to 16 Hg"
- Air-tight self-sealing gasket assembly
- Available as manual or pneumatic operation
- Available in stainless steel or zinc plated steel
- Coils available in 24V AC/DC, 120V AC or 220V AC
- Valves are standard with straight ends (2" - 6" O.D. and 8" w/ flange)
- Optional rolled or flanged connections available
- Requires 70 Psi (130 Psi maximum air pressure)
- Uses push lock air hose connectors
- Available in 2", 3", 4", 6" OD and 8" w/ flange

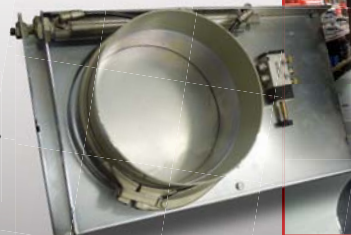


Depending on your size of air-tight blast gate, Ruwac offers two different types of connections to install into your vacuum system. Compression couplers can be used with 2" to 6" sizes, while a clamp and gasket are used for flanged connections with an 8" inlet.

Compression Couplers - For 2" to 6" Inlets



Clamps and Gaskets - For 8" Flanged Connections



Air-Tight Blast Gate Valves

Zinc - Manual Blast Gate

Part #	Description
1502	2.0" manual close
1503	3.0" manual close
1504	4.0" manual close
1506	6.0" manual close
1508	8.0" manual close

Zinc - Pneumatic Blast Gate

Part #	Description
1502PN	2.0" pneumatic close
1503PN	3.0" pneumatic close
1504PN	4.0" pneumatic close
1506PN	6.0" pneumatic close
1508PN	8.0" pneumatic close

Stainless Steel - Manual Blast Gate

Part #	Description
1502S	2.0" manual close
1503S	3.0" manual close
1504S	4.0" manual close
1506S	6.0" manual close
1508S	8.0" manual close

Stainless Steel - Pneumatic Blast Gate

Part #	Description
1502PNS	2.0" pneumatic close
1503PNS	3.0" pneumatic close
1504PNS	4.0" pneumatic close
1506PNS	6.0" pneumatic close
1508PNS	8.0" pneumatic close

Replacement Valve Gaskets (Fit all Gates)

Part #	Description
1502G	2.0" manual close
1503G	3.0" manual close
1504G	4.0" manual close
1506G	6.0" manual close
1508G	8.0" manual close

Specify Required Coil Voltage for Blast Gate

Part #	Description
6765	Solenoid 12V DC for Blast Gate
6760	Solenoid 24V DC for Blast Gate
6770	Solenoid 24V AC for Blast Gate
6780	Solenoid 110V AC for Blast Gate ¹
EC9400A12	Manual Positioning Sensor w/ Relay
EC4128A25	Pneumatic Positioning Sensor w/ Relay

Compression Couplers - For 2" - 6" Inlets

Size	Zinc	Stainless Steel
2"	904991Z	904991S
3"	90512Z	90512S
4"	90524Z	90524S
6"	90536Z	90536S

Clamps and Gaskets - For 8" Flanged Connections

Size	Zinc	Stainless Steel
8" Clamp	JC12202903	JC12203903
8" Gasket	JC10206952	JC10206952
8" Weld End	JC12201060	JC12203060

