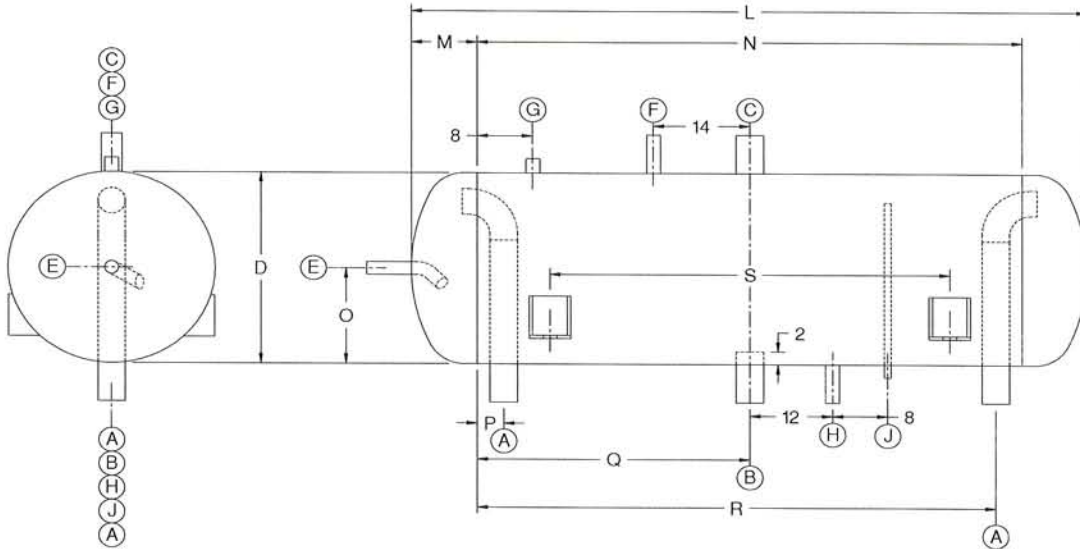




## STANDARD DUAL FLOW HORIZONTAL SURGE DRUM



Nozzle	Description	Connection
A	Wet Return	Stub
B	Liquid Outlet	Stub
C	Gas Outlet	Stub
E	Liquid Makeup	Stub
F	Float Column	Stub
G	Relief	Coupling
H	Oil Pot Drain	Stub
J	Oil Pot Vent	Coupling

### DIMENSIONS

MODEL #	A	B	C	D	E	F	G	H	J	L	M	N	O	P	Q	R	S	Surge Vol. Cu. Ft.	Weight (Lb)
HSDD-12-83	1-1/2"	2-1/2"	2-1/2"	12-3/4"	1"	1-1/4"	1/2"	2"	1"	83"	5-1/2"	72"	6"	3"	36"	69"	42"	2.01	380
HSDD-14-83	1-1/2"	3"	2-1/2"	14"	1"	1-1/4"	1/2"	2"	1"	83-1/2"	5-3/4"	72"	7"	3"	36"	69"	42"	2.86	465
HSDD-16-84	1-1/2"	3"	3"	16"	1-1/4"	1-1/4"	1/2"	2"	1"	84-1/2"	6-1/4"	72"	8"	3"	36"	69"	42"	3.41	470
HSDD-18-85	2"	4"	3"	18"	1-1/4"	1-1/4"	1/2"	2"	1"	85-1/2"	6-5/8"	72"	9"	4"	36"	68"	43"	4.60	610
HSDD-20-86	2"	4"	4"	20"	1-1/2"	1-1/4"	1/2"	2"	1"	86-3/4"	7-3/8"	72"	10"	4"	36"	68"	43"	5.99	560
HSDD-24-88	2"	4"	4"	24"	1-1/2"	1-1/4"	3/4"	2"	1"	88-1/2"	8-1/4"	72"	12"	4"	36"	68"	44"	9.25	935
HSDD-30-115	2-1/2"	5"	5"	30"	2"	1-1/4"	3/4"	2"	1"	115-1/2"	9-3/4"	96"	15"	5"	48"	91"	58"	19.78	1430
HSDD-36-118	3"	6"	6"	36"	2"	1-1/4"	3/4"	2"	1"	118-1/2"	11-1/4"	96"	18"	5"	48"	91"	59"	28.56	2225
HSDD-42-121	3"	8"	6"	42"	2-1/2"	1-1/4"	3/4"	2"	1"	121-1/2"	12-3/4"	96"	21"	6"	48"	90"	61"	40.58	2655
HSDD-48-124	4"	8"	8"	48"	3"	1-1/4"	3/4"	2"	1"	124-1/2"	14-1/4"	96"	24"	6"	48"	90"	62"	55.37	3890
HSDD-54-128	4"	8"	8"	54"	3"	1-1/4"	3/4"	2"	1"	128"	16"	96"	27"	6"	48"	90"	64"	68.14	3735
HSDD-60-131	4"	8"	8"	60"	3"	1-1/4"	3/4"	2"	1"	131"	17-1/2"	96"	30"	6"	48"	90"	66"	86.95	5225

### Notes:

All dimensions and Nozzle sizes are given in inches.

Please consult factory for certified drawings.

Surge volume is the amount of area between normal operating level and high level cutout.

12" thru 48" vessels are designed for 300# DWP -40 +200 Design Temp. Per ASME Section VIII, Division 1

54" and larger vessels are designed for 250# DWP -40 +200 Design Temp. Per ASME Section VIII, Division 1

### HORIZONTAL SURGE DRUM CAPACITIES DUAL FLOW

MODEL #	OPERATING TEMPERATURE										
	TWO STAGE					SINGLE STAGE					
	-50	-40	-30	-20	-20	-10	0	+10	+20	+30	+40
HSDD-12-83	12.0	14.9	18.0	21.3	18.5	21.4	24.2	27.7	31.1	34.1	36.6
HSDD-14-83	15.6	19.4	23.4	27.8	24.1	27.9	36.1	36.1	40.5	44.5	47.7
HSDD-16-84	22.1	27.4	33.2	39.3	34.2	39.5	51.0	51.0	57.3	62.9	67.4
HSDD-18-85	27.4	34.3	41.5	49.1	42.7	49.4	55.8	63.8	71.5	78.6	84.3
HSDD-20-86	35.3	43.7	52.9	62.7	54.5	63.1	71.2	81.5	91.4	100.0	107.0
HSDD-24-88	49.8	61.6	74.6	88.3	76.8	88.9	101.0	115.0	129.0	141.0	151.0
HSDD-30-115	79.5	98.4	119.0	141.0	123.0	142.0	160.0	183.0	206.0	226.0	242.0
HSDD-36-118	113.0	140.0	170.0	201.0	175.0	202.0	229.0	262.0	294.0	322.0	346.0
HSDD-42-121	156.0	194.0	234.0	278.0	242.0	279.0	316.0	361.0	405.0	445.0	476.0
HSDD-48-124	206.0	256.0	309.0	366.0	318.0	368.0	416.0	476.0	534.0	586.0	629.0
HSDD-54-128	259.0	321.0	388.0	460.0	400.0	462.0	523.0	598.0	671.0	737.0	790.0
HSDD-60-131	322.0	399.0	483.0	572.0	498.0	576.0	650.0	744.0	835.0	916.0	983.0

### NOTES:

Capacities are given in tons of refrigeration. (R-717)

Two stage capacities are based on +35 deg. F liquid feed temperature.

Single stage capacities are based on +95 deg. F liquid feed temperature