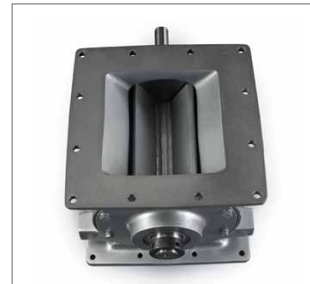


DC Series

Rotary Valve for Dust Collection, Feeding, and Metering Applications



The DC Series valves are built to application-specific requirements, including: custom rotor configurations, factory-applied internal coatings, and sanitary materials of construction.

Features & Benefits

- Available in 3 heights, from 10 1/2" H to 15 1/2" H; and 3 square-flange sizes from 8" to 12".
- Valve housing cast in North America; ensures superior strength and solidification of housing's metallurgy.
- CNC-machined components and housing provide precision tolerances; eliminates axial shaft movement, extends maintenance cycles.
- Excellent performance in high-temperature applications up to 250°F.
- Cast iron housing.
- 6-vane rotor with beveled tips and sides.
- Compact, direct-drive motor package.